

Continental Inaugurates Fully Automated High-Bay Warehouse at Its Tire Plant in Otrokovice

- **Warehouse centralizes local storage capacities with state-of-the-art technologies**
- **New facility can store more than 930,000 tires**
- **"With our fully automated warehouse, we once more improve our logistics processes. We can serve our customers even faster, while further reducing our CO₂ footprint", says Dr. Bernhard Trilken, Head of Manufacturing and Logistics at Continental Tires**



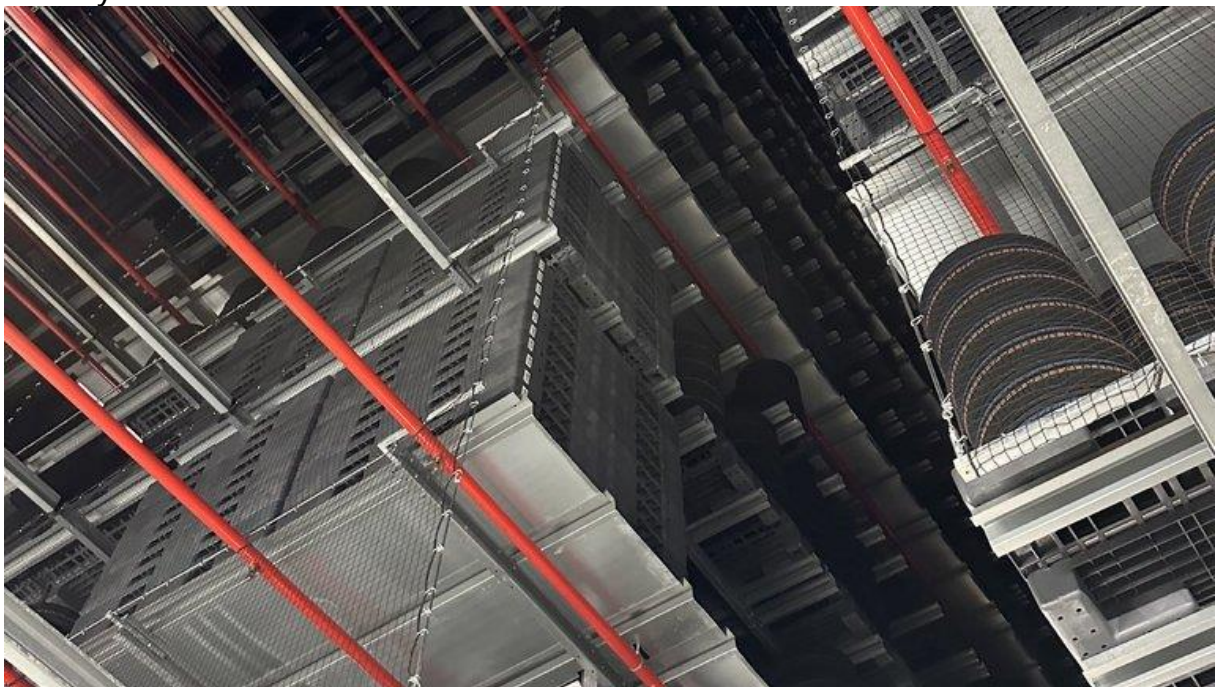
"With our fully automated warehouse, we once more improve our logistics processes. We can serve our customers even faster, while further reducing our CO₂ footprint", says Dr. Bernhard Trilken, Head of Manufacturing and Logistics at Continental Tires.

Hanover, Germany, January 30, 2024. Continental has officially opened a fully automated high-bay warehouse at the tire production plant in Otrokovice, Czech Republic. It has a storage capacity of more than 930,000 tires. With the

facility, the premium tire manufacturer is centralizing its warehouses in the area of Otrokovice. As a result, Continental's logistics processes could be further optimized while lowering CO₂ emissions of its operations.

"With our fully automated warehouse, we once more improve our logistics processes. We can serve our customers even faster, while further reducing our CO₂ footprint", explained Dr. Bernhard Trilken, Head of Manufacturing and Logistics at Continental Tires, at the inauguration of the storage facility. He added: "Sustainable logistics is one key to a resource-efficient and environmentally friendly supply chain." Continental systematically reduces the environmental footprint of its logistics operations. To do so, the tire manufacturer integrates innovative technologies, optimizes storage capacities, and routes and uses renewable energies to manage scarce resources as efficiently as possible.

Robots dispatch tires in warehouse as high as the American Statue of Liberty



The warehouse has height of 43 meters – almost the American Statue of Liberty – and can store more than 930,000 tires.

The new warehouse is 43 meters high – which equals approximately to the height of the Statue of Liberty in New York, USA. On an area of 10,000 square meters, the building can store more than 930,000 tires. High racks with small aisles allow vertical and horizontal storage. Mobile stackers automatically move the tires stored on pallets around the warehouse area.

The electricity used to power the warehouse derives from renewable sources. As it is the case at all Continental production facilities worldwide since late 2020, in accordance with the criteria of the global RE100 initiative.



The fully automated warehouse was built in approximately one and a half years. It centralizes Continental's local tire warehouses to one location in Otrokovice.

Continental consistently invests in the digitalization and automation of its global manufacturing operations at its 20 tire plants in 16 countries worldwide. The focus lies on research and development of new technologies, alternative materials, environmentally friendly production as well continuous improvements of the overall efficiency of logistics processes. By 2050 at the latest, the tire manufacturer aims to achieve 100 percent climate neutrality along its entire value chain.