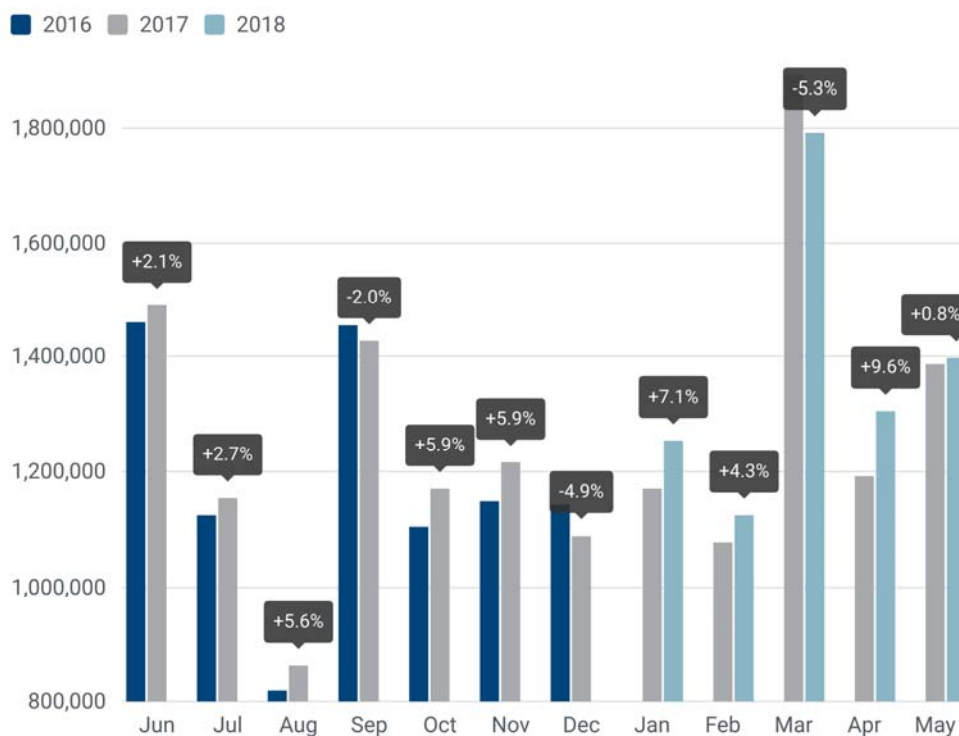


**PRESS EMBARGO: 8.00 AM (6.00 AM GMT), 15 June 2018**

## NEW PASSENGER CAR REGISTRATIONS EUROPEAN UNION<sup>1</sup>



### Passenger car registrations: +2.4% five months into 2018; +0.8% in May

**In May 2018**, the EU passenger car market flattened out after showing robust growth in April. Registrations of new cars were only 0.8% higher than in May 2017, counting 1,398,913 units in total. Results were diverse among the major EU markets, with Spain (+7.2%) and the United Kingdom (+3.4%) posting growth, while Germany (-5.8%) and Italy (-2.8%) saw their demand for cars decline in May.

**From January to May 2018**, demand for new cars in the European Union remained positive, largely sustained by the strong performance of the new EU member states, where registrations went up by 11.6% so far this year. Overall, 6,879,885 new passenger cars were registered in the EU during the first five months of 2018, or 2.4% more than one year ago. Car registrations increased in Spain (+10.6%), France (+3.5%) and Germany (+2.6%), although demand contracted in the United Kingdom (-6.8%).

<sup>1</sup> Data for Malta not available on a monthly basis

# P R E S S R E L E A S E

**PRESS EMBARGO FOR ALL DATA:  
8.00 AM (6.00 AM GMT), 15 June 2018**

## PROVISIONAL

### NEW PASSENGER CAR REGISTRATIONS BY MARKET EUROPEAN UNION<sup>1</sup>

15/06/2018

	May '18	May '17	%Change 18/17	Jan - May '18	Jan - May '17	%Change 18/17
AUSTRIA	32,551	32,426	+0.4	154,846	151,120	+2.5
BELGIUM	54,999	51,342	+7.1	275,158	267,183	+3.0
BULGARIA	3,308	2,457	+34.6	14,496	11,543	+25.6
CROATIA	8,762	8,122	+7.9	29,702	25,187	+17.9
CYPRUS	1,231	1,242	-0.9	6,478	5,970	+8.5
CZECH REPUBLIC	25,720	27,009	-4.8	117,852	117,817	+0.03
DENMARK	22,560	22,300	+1.2	98,235	99,833	-1.6
ESTONIA	2,568	2,523	+1.8	11,624	10,472	+11.0
FINLAND	12,482	11,058	+12.9	57,944	53,583	+8.1
FRANCE	191,702	191,416	+0.1	935,934	904,341	+3.5
GERMANY	305,057	323,952	-5.8	1,497,723	1,459,333	+2.6
GREECE	12,467	10,666	+16.9	49,741	40,215	+23.7
HUNGARY	12,871	10,956	+17.5	56,542	43,984	+28.6
IRELAND	6,070	5,992	+1.3	85,913	89,815	-4.3
ITALY	199,113	204,807	-2.8	945,677	948,938	-0.3
LATVIA	1,692	1,542	+9.7	7,342	7,023	+4.5
LITHUANIA <sup>4</sup>	3,129	2,359	+32.6	12,736	10,137	+25.6
LUXEMBOURG	5,361	5,535	-3.1	25,028	23,740	+5.4
NETHERLANDS	36,952	36,310	+1.8	206,506	185,190	+11.5
POLAND	42,354	39,716	+6.6	226,955	205,124	+10.6
PORTUGAL	23,576	23,653	-0.3	108,286	102,352	+5.8
ROMANIA	11,555	8,062	+43.3	47,827	36,978	+29.3
SLOVAKIA	9,674	9,217	+5.0	42,424	39,303	+7.9
SLOVENIA	7,301	6,786	+7.6	34,299	31,477	+9.0
SPAIN	135,522	126,411	+7.2	592,269	535,697	+10.6
SWEDEN	37,687	35,326	+6.7	159,299	155,206	+2.6
UNITED KINGDOM	192,649	186,265	+3.4	1,079,049	1,158,357	-6.8
<b>EUROPEAN UNION</b>	<b>1,398,913</b>	<b>1,387,450</b>	<b>+0.8</b>	<b>6,879,885</b>	<b>6,719,918</b>	<b>+2.4</b>
EU15 <sup>2</sup>	1,268,748	1,267,459	+0.1	6,271,608	6,174,903	+1.6
EU12 <sup>3</sup>	130,165	119,991	+8.5	608,277	545,015	+11.6
ICELAND <sup>4</sup>	2,858	3,849	-25.7	9,285	10,556	-12.0
NORWAY	13,046	14,175	-8.0	60,900	63,755	-4.5
SWITZERLAND	27,826	28,411	-2.1	126,434	126,995	-0.4
EFTA	43,730	46,435	-5.8	196,619	201,306	-2.3
EU + EFTA	1,442,643	1,433,885	+0.6	7,076,504	6,921,224	+2.2
EU15 + EFTA	1,312,478	1,313,894	-0.1	6,468,227	6,376,209	+1.4

SOURCE: NATIONAL AUTOMOBILE MANUFACTURERS' ASSOCIATIONS

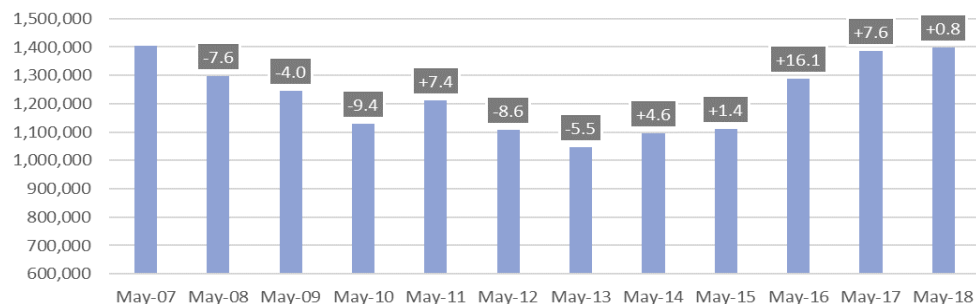
<sup>1</sup> Data for Malta n.a.

<sup>3</sup> Member States having joined the EU since 2004

<sup>2</sup> Member States before the 2004 enlargement

<sup>4</sup> Estimates

New passenger car registrations in the EU - month trend | 2007-2018



Next press release: Tuesday 17 July 2018

This information is available on the ACEA website: <http://www.acea.be>

# PRESS RELEASE

## PROVISIONAL

### NEW PASSENGER CAR REGISTRATIONS BY MANUFACTURER<sup>1</sup>

#### EUROPEAN UNION (EU)

15/06/2018

	May					January - May				
	%Share <sup>2</sup>		Units	Units	%Change	%Share <sup>2</sup>		Units	Units	%Change
	'18	'17	'18	'17	18/17	'18	'17	'18	'17	18/17
<b>VW Group</b>	<b>25.1</b>	<b>24.3</b>	<b>350,894</b>	<b>336,677</b>	<b>+4.2</b>	<b>24.3</b>	<b>23.3</b>	<b>1,673,445</b>	<b>1,567,330</b>	<b>+6.8</b>
VOLKSWAGEN	11.9	11.3	166,832	156,996	+6.3	11.3	10.8	778,632	722,479	+7.8
AUDI	5.0	5.3	69,806	73,597	-5.2	5.0	5.3	344,275	355,259	-3.1
SKODA	4.6	4.7	63,824	64,758	-1.4	4.6	4.3	314,820	289,056	+8.9
SEAT	3.0	2.4	42,460	33,789	+25.7	2.9	2.5	200,036	167,260	+19.6
PORSCHE	0.5	0.5	7,636	7,145	+6.9	0.5	0.5	33,835	31,232	+8.3
OTHERS <sup>3</sup>	0.0	0.0	336	392	-14.3	0.0	0.0	1,847	2,044	-9.6
<b>PSA Group</b>	<b>16.0</b>	<b>10.2</b>	<b>223,582</b>	<b>141,550</b>	<b>+58.0</b>	<b>16.3</b>	<b>10.1</b>	<b>1,123,518</b>	<b>680,887</b>	<b>+65.0</b>
PEUGEOT	6.1	6.0	85,769	82,980	+3.4	6.4	6.0	437,426	400,062	+9.3
OPEL/VAUXHALL <sup>4</sup>	5.7	0.0	80,304			5.8	0.0	397,810		
CITROEN	3.8	3.9	53,086	54,786	-3.1	3.9	3.9	267,803	260,614	+2.8
DS	0.3	0.3	4,423	3,784	+16.9	0.3	0.3	20,479	20,211	+1.3
<b>RENAULT Group</b>	<b>11.6</b>	<b>11.0</b>	<b>161,672</b>	<b>151,996</b>	<b>+6.4</b>	<b>10.4</b>	<b>10.1</b>	<b>713,866</b>	<b>679,583</b>	<b>+5.0</b>
RENAULT	7.7	7.6	107,960	105,016	+2.8	7.1	7.2	485,455	485,214	+0.05
DACIA	3.8	3.4	53,074	46,513	+14.1	3.3	2.9	225,861	192,376	+17.4
LADA	0.0	0.0	476	467	+1.9	0.0	0.0	2,185	1,993	+9.6
ALPINE	0.0	0.0	162	0		0.0	0.0	365	0	
<b>FCA Group</b>	<b>7.7</b>	<b>7.8</b>	<b>108,096</b>	<b>108,136</b>	<b>-0.04</b>	<b>7.0</b>	<b>7.4</b>	<b>483,552</b>	<b>494,806</b>	<b>-2.3</b>
FIAT	5.4	6.1	75,827	85,321	-11.1	5.0	5.6	344,359	378,781	-9.1
JEEP	1.3	0.6	17,916	8,848	+102.5	1.0	0.6	71,979	43,163	+66.8
ALFA ROMEO	0.6	0.6	8,674	7,825	+10.8	0.6	0.5	40,105	35,673	+12.4
LANCIA/CHRYSLER	0.4	0.4	5,071	5,362	-5.4	0.3	0.5	23,234	32,855	-29.3
OTHERS <sup>5</sup>	0.0	0.1	608	780	-22.1	0.1	0.1	3,875	4,334	-10.6
<b>FORD</b>	<b>6.3</b>	<b>6.3</b>	<b>87,866</b>	<b>87,545</b>	<b>+0.4</b>	<b>6.8</b>	<b>7.0</b>	<b>464,818</b>	<b>469,470</b>	<b>-1.0</b>
<b>BMW Group</b>	<b>5.8</b>	<b>6.2</b>	<b>81,205</b>	<b>86,360</b>	<b>-6.0</b>	<b>6.0</b>	<b>6.3</b>	<b>413,109</b>	<b>423,214</b>	<b>-2.4</b>
BMW	4.5	4.9	62,956	68,271	-7.8	4.7	5.1	326,265	339,503	-3.9
MINI	1.3	1.3	18,249	18,089	+0.9	1.3	1.2	86,844	83,711	+3.7
<b>DAIMLER</b>	<b>5.9</b>	<b>6.3</b>	<b>82,688</b>	<b>87,314</b>	<b>-5.3</b>	<b>5.9</b>	<b>6.1</b>	<b>403,050</b>	<b>406,961</b>	<b>-1.0</b>
MERCEDES	5.3	5.6	73,549	77,983	-5.7	5.3	5.4	362,536	364,768	-0.6
SMART	0.7	0.7	9,139	9,331	-2.1	0.6	0.6	40,514	42,193	-4.0
<b>TOYOTA Group</b>	<b>4.5</b>	<b>4.3</b>	<b>63,322</b>	<b>60,203</b>	<b>+5.2</b>	<b>4.8</b>	<b>4.6</b>	<b>327,860</b>	<b>311,578</b>	<b>+5.2</b>
TOYOTA	4.2	4.1	59,337	56,899	+4.3	4.5	4.4	308,019	293,613	+4.9
LEXUS	0.3	0.2	3,985	3,304	+20.6	0.3	0.3	19,841	17,965	+10.4
<b>HYUNDAI</b>	<b>3.3</b>	<b>3.3</b>	<b>46,652</b>	<b>45,256</b>	<b>+3.1</b>	<b>3.4</b>	<b>3.2</b>	<b>232,691</b>	<b>215,022</b>	<b>+8.2</b>
<b>NISSAN</b>	<b>2.8</b>	<b>3.4</b>	<b>38,970</b>	<b>46,617</b>	<b>-16.4</b>	<b>3.4</b>	<b>3.8</b>	<b>230,553</b>	<b>255,692</b>	<b>-9.8</b>
<b>KIA</b>	<b>3.0</b>	<b>2.9</b>	<b>41,927</b>	<b>40,415</b>	<b>+3.7</b>	<b>3.1</b>	<b>3.0</b>	<b>213,151</b>	<b>203,362</b>	<b>+4.8</b>
<b>VOLVO CAR CORP.</b>	<b>1.8</b>	<b>1.8</b>	<b>24,562</b>	<b>24,874</b>	<b>-1.3</b>	<b>1.8</b>	<b>1.8</b>	<b>125,383</b>	<b>123,049</b>	<b>+1.9</b>
<b>JAGUAR LAND ROVER Group</b>	<b>1.2</b>	<b>1.1</b>	<b>16,581</b>	<b>15,777</b>	<b>+5.1</b>	<b>1.3</b>	<b>1.5</b>	<b>91,855</b>	<b>102,299</b>	<b>-10.2</b>
LAND ROVER	0.7	0.8	10,162	10,657	-4.6	0.9	1.0	58,522	69,040	-15.2
JAGUAR	0.5	0.4	6,419	5,120	+25.4	0.5	0.5	33,333	33,259	+0.2
<b>HONDA</b>	<b>0.8</b>	<b>0.7</b>	<b>10,706</b>	<b>9,950</b>	<b>+7.6</b>	<b>0.9</b>	<b>0.9</b>	<b>63,974</b>	<b>61,713</b>	<b>+3.7</b>
<b>GM<sup>4</sup></b>	<b>0.0</b>	<b>5.9</b>	<b>93</b>	<b>84,817</b>	<b>-99.9</b>	<b>0.0</b>	<b>6.2</b>	<b>985</b>	<b>426,777</b>	<b>-99.8</b>

SOURCE: ACEA MEMBERS

<sup>1</sup> Includes data for ACEA members

<sup>2</sup> ACEA estimation based on total by market

<sup>3</sup> Includes Bentley, Lamborghini and Bugatti

<sup>4</sup> Following PSA acquisition of the Opel and Vauxhall brands, as of 1 August 2017 Opel/Vauxhall registrations are accounted in the PSA Group

<sup>5</sup> Includes Dodge and Maserati

# PRESS RELEASE PROVISIONAL

## NEW PASSENGER CAR REGISTRATIONS BY MANUFACTURER<sup>1</sup>

### EU + EFTA Countries

15/06/2018

	May					January - May				
	%Share <sup>2</sup>		Units	Units	%Change	%Share <sup>2</sup>		Units	Units	%Change
	'18	'17	'18	'17	18/17	'18	'17	'18	'17	18/17
<b>VW Group</b>	<b>25.2</b>	<b>24.4</b>	<b>363,117</b>	<b>350,096</b>	<b>+3.7</b>	<b>24.4</b>	<b>23.4</b>	<b>1,723,938</b>	<b>1,621,612</b>	<b>+6.3</b>
VOLKSWAGEN	11.9	11.4	172,356	163,022	+5.7	11.3	10.8	800,214	746,293	+7.2
AUDI	5.0	5.3	72,140	76,139	-5.3	5.0	5.3	354,021	365,971	-3.3
SKODA	4.6	4.7	66,539	68,027	-2.2	4.6	4.4	326,452	301,500	+8.3
SEAT	3.0	2.4	43,646	34,820	+25.3	2.9	2.5	205,358	172,303	+19.2
PORSCHE	0.6	0.5	8,076	7,665	+5.4	0.5	0.5	35,912	33,335	+7.7
OTHERS <sup>3</sup>	0.0	0.0	360	423	-14.9	0.0	0.0	1,981	2,210	-10.4
<b>PSA Group</b>	<b>15.8</b>	<b>10.0</b>	<b>227,345</b>	<b>144,046</b>	<b>+57.8</b>	<b>16.1</b>	<b>10.0</b>	<b>1,140,764</b>	<b>691,847</b>	<b>+64.9</b>
PEUGEOT	6.0	5.9	87,245	84,514	+3.2	6.3	5.9	444,096	406,788	+9.2
OPEL/VAUXHALL <sup>4</sup>	5.7	0.0	81,752			5.7	0.0	404,237		
CITROEN	3.7	3.9	53,835	55,669	-3.3	3.8	3.8	271,607	264,483	+2.7
DS	0.3	0.3	4,513	3,863	+16.8	0.3	0.3	20,824	20,576	+1.2
<b>RENAULT Group</b>	<b>11.4</b>	<b>10.8</b>	<b>164,424</b>	<b>154,344</b>	<b>+6.5</b>	<b>10.3</b>	<b>10.0</b>	<b>725,422</b>	<b>690,578</b>	<b>+5.0</b>
RENAULT	7.6	7.4	109,739	106,495	+3.0	7.0	7.1	492,975	492,444	+0.1
DACIA	3.7	3.3	54,018	47,381	+14.0	3.2	2.8	229,850	196,135	+17.2
LADA	0.0	0.0	476	468	+1.7	0.0	0.0	2,186	1,999	+9.4
ALPINE	0.0	0.0	191	0				411	0	
<b>FCA Group</b>	<b>7.6</b>	<b>7.7</b>	<b>110,120</b>	<b>109,940</b>	<b>+0.2</b>	<b>6.9</b>	<b>7.3</b>	<b>491,738</b>	<b>502,569</b>	<b>-2.2</b>
FIAT	5.3	6.0	76,711	86,327	-11.1	4.9	5.5	348,359	383,247	-9.1
JEEP	1.3	0.6	18,487	9,183	+101.3	1.0	0.6	74,064	44,514	+66.4
ALFA ROMEO	0.6	0.6	9,181	8,180	+12.2	0.6	0.5	41,847	37,064	+12.9
LANCIA/CHRYSLER	0.4	0.4	5,071	5,362	-5.4	0.3	0.5	23,236	32,858	-29.3
OTHERS <sup>5</sup>	0.0	0.1	670	888	-24.5	0.1	0.1	4,232	4,886	-13.4
<b>FORD</b>	<b>6.2</b>	<b>6.2</b>	<b>89,715</b>	<b>89,280</b>	<b>+0.5</b>	<b>6.7</b>	<b>6.9</b>	<b>473,419</b>	<b>477,572</b>	<b>-0.9</b>
<b>BMW Group</b>	<b>5.9</b>	<b>6.3</b>	<b>85,017</b>	<b>90,471</b>	<b>-6.0</b>	<b>6.1</b>	<b>6.4</b>	<b>431,505</b>	<b>441,378</b>	<b>-2.2</b>
BMW	4.6	5.0	66,202	71,724	-7.7	4.8	5.1	341,747	355,133	-3.8
MINI	1.3	1.3	18,815	18,747	+0.4	1.3	1.2	89,758	86,245	+4.1
<b>DAIMLER</b>	<b>6.0</b>	<b>6.4</b>	<b>85,901</b>	<b>91,066</b>	<b>-5.7</b>	<b>5.9</b>	<b>6.1</b>	<b>418,467</b>	<b>423,458</b>	<b>-1.2</b>
MERCEDES	5.3	5.7	76,528	81,529	-6.1	5.3	5.5	377,052	380,243	-0.8
SMART	0.6	0.7	9,373	9,537	-1.7	0.6	0.6	41,415	43,215	-4.2
<b>TOYOTA Group</b>	<b>4.6</b>	<b>4.5</b>	<b>66,496</b>	<b>63,835</b>	<b>+4.2</b>	<b>4.8</b>	<b>4.7</b>	<b>340,544</b>	<b>326,485</b>	<b>+4.3</b>
TOYOTA	4.3	4.2	62,377	60,430	+3.2	4.5	4.4	320,101	307,889	+4.0
LEXUS	0.3	0.2	4,119	3,405	+21.0	0.3	0.3	20,443	18,596	+9.9
<b>NISSAN</b>	<b>2.8</b>	<b>3.3</b>	<b>40,274</b>	<b>47,798</b>	<b>-15.7</b>	<b>3.4</b>	<b>3.8</b>	<b>238,700</b>	<b>262,542</b>	<b>-9.1</b>
<b>HYUNDAI</b>	<b>3.3</b>	<b>3.3</b>	<b>47,880</b>	<b>46,791</b>	<b>+2.3</b>	<b>3.4</b>	<b>3.2</b>	<b>238,607</b>	<b>221,205</b>	<b>+7.9</b>
<b>KIA</b>	<b>3.0</b>	<b>2.9</b>	<b>42,956</b>	<b>41,527</b>	<b>+3.4</b>	<b>3.1</b>	<b>3.0</b>	<b>217,348</b>	<b>207,793</b>	<b>+4.6</b>
<b>VOLVO CAR CORP.</b>	<b>1.8</b>	<b>1.8</b>	<b>26,103</b>	<b>26,438</b>	<b>-1.3</b>	<b>1.9</b>	<b>1.9</b>	<b>134,046</b>	<b>131,239</b>	<b>+2.1</b>
<b>JAGUAR LAND ROVER Group</b>	<b>1.2</b>	<b>1.1</b>	<b>17,090</b>	<b>16,162</b>	<b>+5.7</b>	<b>1.3</b>	<b>1.5</b>	<b>94,379</b>	<b>104,437</b>	<b>-9.6</b>
LAND ROVER	0.7	0.8	10,475	10,956	-4.4	0.9	1.0	60,160	70,557	-14.7
JAGUAR	0.5	0.4	6,615	5,206	+27.1	0.5	0.5	34,219	33,880	+1.0
<b>HONDA</b>	<b>0.8</b>	<b>0.7</b>	<b>11,088</b>	<b>10,537</b>	<b>+5.2</b>	<b>0.9</b>	<b>0.9</b>	<b>66,395</b>	<b>64,227</b>	<b>+3.4</b>
<b>GM<sup>4</sup></b>	<b>0.0</b>	<b>6.0</b>	<b>136</b>	<b>86,438</b>	<b>-99.8</b>	<b>0.0</b>	<b>6.3</b>	<b>1,157</b>	<b>433,983</b>	<b>-99.7</b>

SOURCE: ACEA MEMBERS

<sup>1</sup> Includes data for ACEA members

<sup>2</sup> ACEA estimation based on total by market

<sup>3</sup> Includes Bentley, Lamborghini and Bugatti

<sup>4</sup> Following PSA acquisition of the Opel and Vauxhall brands, as of 1 August 2017 Opel/Vauxhall registrations are accounted in the PSA Group

<sup>5</sup> Includes Dodge and Maserati

# PRESS RELEASE PROVISIONAL

## NEW PASSENGER CAR REGISTRATIONS BY MANUFACTURER<sup>1</sup> WESTERN EUROPE (EU15 + EFTA Countries)

15/06/2018

	May					January - May				
	%Share <sup>2</sup>		Units	Units	%Change	%Share <sup>2</sup>		Units	Units	%Change
	'18	'17	'18	'17	18/17	'18	'17	'18	'17	18/17
<b>VW Group</b>	<b>24.7</b>	<b>23.7</b>	<b>324,313</b>	<b>311,577</b>	<b>+4.1</b>	<b>23.8</b>	<b>22.7</b>	<b>1,537,012</b>	<b>1,450,057</b>	<b>+6.0</b>
VOLKSWAGEN	12.1	11.4	158,719	149,675	+6.0	11.4	10.8	738,187	687,180	+7.4
AUDI	5.3	5.6	69,477	73,726	-5.8	5.3	5.5	340,346	353,671	-3.8
SKODA	3.6	3.6	47,111	47,943	-1.7	3.6	3.4	229,987	214,403	+7.3
SEAT	3.1	2.5	40,852	32,520	+25.6	3.0	2.5	192,178	160,612	+19.7
PORSCHE	0.6	0.6	7,809	7,309	+6.8	0.5	0.5	34,431	32,070	+7.4
OTHERS <sup>3</sup>	0.0	0.0	345	404	-14.6	0.0	0.0	1,883	2,121	-11.2
<b>PSA Group</b>	<b>16.2</b>	<b>10.5</b>	<b>211,990</b>	<b>137,439</b>	<b>+54.2</b>	<b>16.5</b>	<b>10.4</b>	<b>1,069,904</b>	<b>662,587</b>	<b>+61.5</b>
PEUGEOT	6.3	6.1	82,490	80,631	+2.3	6.5	6.1	422,218	389,371	+8.4
OPEL/VAUXHALL <sup>4</sup>	5.7	0.0	74,495			5.7	0.0	369,676		
CITROEN	3.8	4.0	50,522	52,999	-4.7	4.0	4.0	257,303	252,912	+1.7
DS	0.3	0.3	4,483	3,809	+17.7	0.3	0.3	20,707	20,304	+2.0
<b>RENAULT Group</b>	<b>10.9</b>	<b>10.4</b>	<b>142,770</b>	<b>136,642</b>	<b>+4.5</b>	<b>9.9</b>	<b>9.7</b>	<b>642,457</b>	<b>621,158</b>	<b>+3.4</b>
RENAULT	7.7	7.5	100,616	99,047	+1.6	7.1	7.2	457,348	460,144	-0.6
DACIA	3.2	2.8	41,721	37,364	+11.7	2.8	2.5	183,531	159,906	+14.8
LADA	0.0	0.0	243	231	+5.2	0.0	0.0	1,170	1,108	+5.6
ALPINE	0.0	0.0	190	0		0.0	0.0	408	0	
<b>FCA Group</b>	<b>8.0</b>	<b>8.0</b>	<b>104,726</b>	<b>105,668</b>	<b>-0.9</b>	<b>7.3</b>	<b>7.6</b>	<b>470,811</b>	<b>484,039</b>	<b>-2.7</b>
FIAT	5.5	6.3	72,643	83,017	-12.5	5.1	5.8	332,355	369,126	-10.0
JEEP	1.3	0.7	17,511	8,555	+104.7	1.1	0.7	70,659	41,584	+69.9
ALFA ROMEO	0.7	0.6	8,858	7,924	+11.8	0.6	0.6	40,507	36,002	+12.5
LANCIA/CHRYSLER	0.4	0.4	5,068	5,318	-4.7	0.4	0.5	23,221	32,666	-28.9
OTHERS <sup>5</sup>	0.0	0.1	646	854	-24.4	0.1	0.1	4,069	4,661	-12.7
<b>FORD</b>	<b>6.2</b>	<b>6.3</b>	<b>81,765</b>	<b>82,347</b>	<b>-0.7</b>	<b>6.7</b>	<b>7.0</b>	<b>434,146</b>	<b>444,788</b>	<b>-2.4</b>
<b>BMW Group</b>	<b>6.2</b>	<b>6.6</b>	<b>81,048</b>	<b>86,380</b>	<b>-6.2</b>	<b>6.4</b>	<b>6.6</b>	<b>414,425</b>	<b>423,670</b>	<b>-2.2</b>
BMW	4.8	5.2	62,631	68,017	-7.9	5.1	5.3	326,820	339,149	-3.6
MINI	1.4	1.4	18,417	18,363	+0.3	1.4	1.3	87,605	84,521	+3.6
<b>DAIMLER</b>	<b>6.3</b>	<b>6.6</b>	<b>82,034</b>	<b>87,261</b>	<b>-6.0</b>	<b>6.2</b>	<b>6.4</b>	<b>400,752</b>	<b>406,750</b>	<b>-1.5</b>
MERCEDES	5.5	5.9	72,750	77,778	-6.5	5.6	5.7	359,685	363,790	-1.1
SMART	0.7	0.7	9,284	9,483	-2.1	0.6	0.7	41,067	42,960	-4.4
<b>TOYOTA Group</b>	<b>4.3</b>	<b>4.2</b>	<b>56,512</b>	<b>55,267</b>	<b>+2.3</b>	<b>4.5</b>	<b>4.4</b>	<b>291,615</b>	<b>282,572</b>	<b>+3.2</b>
TOYOTA	4.0	4.0	53,057	52,310	+1.4	4.2	4.2	273,996	266,488	+2.8
LEXUS	0.3	0.2	3,455	2,957	+16.8	0.3	0.3	17,619	16,084	+9.5
<b>NISSAN</b>	<b>2.8</b>	<b>3.4</b>	<b>37,291</b>	<b>44,525</b>	<b>-16.2</b>	<b>3.4</b>	<b>3.9</b>	<b>220,265</b>	<b>246,376</b>	<b>-10.6</b>
<b>HYUNDAI</b>	<b>3.1</b>	<b>3.1</b>	<b>41,322</b>	<b>40,981</b>	<b>+0.8</b>	<b>3.2</b>	<b>3.0</b>	<b>208,266</b>	<b>194,096</b>	<b>+7.3</b>
<b>KIA</b>	<b>2.8</b>	<b>2.7</b>	<b>37,182</b>	<b>35,884</b>	<b>+3.6</b>	<b>2.9</b>	<b>2.9</b>	<b>190,340</b>	<b>183,362</b>	<b>+3.8</b>
<b>VOLVO CAR CORP.</b>	<b>1.9</b>	<b>1.9</b>	<b>24,518</b>	<b>25,053</b>	<b>-2.1</b>	<b>2.0</b>	<b>1.9</b>	<b>126,237</b>	<b>123,851</b>	<b>+1.9</b>
<b>JAGUAR LAND ROVER Group</b>	<b>1.3</b>	<b>1.2</b>	<b>16,732</b>	<b>15,636</b>	<b>+7.0</b>	<b>1.4</b>	<b>1.6</b>	<b>91,873</b>	<b>101,885</b>	<b>-9.8</b>
LAND ROVER	0.8	0.8	10,236	10,563	-3.1	0.9	1.1	58,622	68,611	-14.6
JAGUAR	0.5	0.4	6,496	5,073	+28.1	0.5	0.5	33,251	33,274	-0.1
<b>HONDA</b>	<b>0.7</b>	<b>0.7</b>	<b>9,703</b>	<b>9,436</b>	<b>+2.8</b>	<b>0.9</b>	<b>0.9</b>	<b>58,634</b>	<b>57,537</b>	<b>+1.9</b>
<b>GM<sup>4</sup></b>	<b>0.0</b>	<b>6.0</b>	<b>130</b>	<b>79,365</b>	<b>-99.8</b>	<b>0.0</b>	<b>6.3</b>	<b>1,145</b>	<b>401,000</b>	<b>-99.7</b>

SOURCE: ACEA MEMBERS

<sup>1</sup> Includes data for ACEA members

<sup>2</sup> ACEA estimation based on total by market

<sup>3</sup> Includes Bentley, Lamborghini and Bugatti

<sup>4</sup> Following PSA acquisition of the Opel and Vauxhall brands, as of 1 August 2017 Opel/Vauxhall registrations are accounted in the PSA Group

<sup>5</sup> Includes Dodge and Maserati